



TAIWAN COMPANY

Add: No. 31, Gongye 2nd Rd., Annan Dist., Tainan City, Taiwan
Tel: +886-6-3847330
Fax: +886-6-3842728

CHINA COMPANY

Add: NO.588,DongHong Road,Guanlin Town,Yixing City,jiangsu province
Tel: +86-510-87210909 87212681 87212685 87210908
Fax: +86-510-87212680
E-mail: sale1@wxcaifeng.com

台湾公司

地址: 台湾台南市安南区工业二路31号
电话: +886-6-3847330
传真: +886-6-3842728

中国公司

地址: 江苏省宜兴市官林镇东虹路588号
电话: +86-510-87210909 87212681 87212685 87210908
传真: +86-510-87212680
邮箱: sale1@wxcaifeng.com

安徽办事处

地址: 安徽省合肥市华南城精品五区5A-1C3-17-20号
电话: +86-18961757989 18018326218

www.wxcaifeng.com



Toggle type Injection Molding Machine

曲轴式射出成型机

100 tons - 600 tons mold clamping force
100吨-600吨锁模力

CAI FENG MACHINERY CO.,LTD
采锋机械有限公司

FROM TAIWAN SERVING THE WORLD

源于台湾 放眼世界

With the trend of low carbon & environmental protection, the plastics industry is progressing faster and faster. The features of being multi-cavity, light weight, and fast cycle have already been the demand of plastics industries for the injection molding machine. We CAIFENG MACHINERY, can be the choice for you.

随着全球提倡低碳环保，以及塑料工业快速发展，多腔化、轻量化、快速化已经成为注塑工厂的需求，而采锋正是您的选择。

OPERATION & PHILOSOPHY

经营及理念

- Keep optimizing the quality of products, and following the trend of market demand.
- Management & development of service team, supporting our customer effectively at any time.
- 结合市场需要，优化产品品质
完善售服作业，有效支持客户

QUALITY & POLICY

品质政策

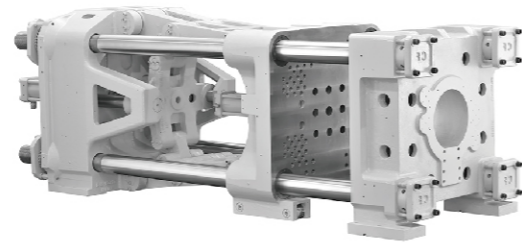
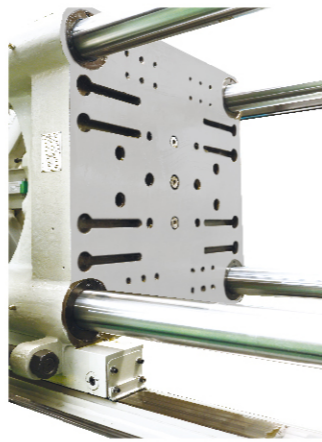
- Keep optimizing the quality of products to satisfy the demands of customer.
- Skilled engineers & designers with good experience.
- Standard operation procedure to achieve high standard of machine.
- 持续提升品质，追求客户满意
- 务实员工训练，精准技术传承
- 模组作业标准，实现最高品质



CLAMPING UNIT

锁模单元

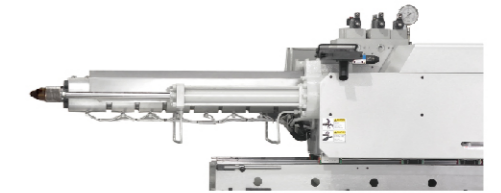
- Clamping mechanism guarantees best mold fitting.
 - Uniform clamping force distribution increases mold service life and reduces flash in plastic product.
 - High speed clamping achieves higher productivity;
 - Computerized control for steady and precisely controlled injection pressure increases both machine and molds' service life.
 - FEM analysis of mechanical behavior increases platens performance by 15%.
 - Tie bar oriented shaping surface decreases stress by allowing force to evenly distribute and thus increases service life.
 - The nuts with oriented shape prevent stress concentration on tie bar.
- 高刚性锁模结构保证可信合模精度;
 - 高刚性优质化箱式结构模板, 使模具受力均匀, 使用寿命增长, 且注塑无毛边;
 - 快速调模功能, 提升生产效率;
 - 电脑控制多段流量压力, 有助延长机器和模具使用寿命;
 - 运用 FEM 分析 BOX 构造机壁, 刚性同比约提高 15%;
 - 哥林柱弧形状的螺纹设计有效的防止应力的集中, 使寿命更延长;
 - 螺帽采用耐久性的设计, 使哥林柱的螺柱应力分散。



INJECTION UNIT

射出单元

- Within 0.1 second response rate, the controller can achieve the repeatability up to 0.1% accuracy.
- Digital back pressure can be controlled at high accuracy inside the machine controller.
- High-torque hydraulic motor enables good plasticizing and molding for different resins.
- Steady double cylinder injection unit with high level of precision.
- Screw auger is corrosion-resistant and variations to match different resins are available.
- Hot rolling type steel by heat treatment with excellent strength and hardness.
- Quench hardened with great strength.
- Rust and corrosion proof by at-rust treatment.



- 0.1sec 以内的高速应答时间及 0.1% 以内的重复性, 确保射出精度;
- 屏幕设定比例阀控制背压, 实现高度精准的生产;
- 采用大扭矩液压马达, 实现对各类塑料的充分塑化;
- 射出采用双油缸平行注射, 射出稳定、定位精准;

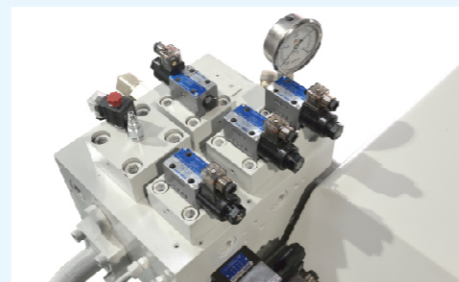
- 螺杆专业设计, 制程严谨, 耐磨耗, 可提供客户生产所需规格;
- 机架材质采用热扎型钢做骨架强度高;
- 作回火硬度消除;
- 喷除表面焊渣喷防锈底漆。

HYDRAULIC UNIT

液压单元

- Servo driven, energy savings 30% to 70% less power consumes compared to the previous variable displacement pump system.
- Logical hydraulic manifold design, for ultra fast response.
- All machine design for easy repair and maintenance.

- 高效节能, 依产品不同对比传统定量泵省电 30%-70%;
- 液压系统采用逻辑阀集中式设计, 反应更敏捷;
- 容易维修和保养;



ELECTRIC UNIT

电器单元

- Completely software calibration function.
- Temperature accuracy 0.1°C, analog input (position) accuracy 0.01mm.
- Input: 48 points; output 48 points (6 DC points or AC points).
- Multi-language support 2 languages (standard) can be upgrade to 10 languages (optional).
- Use usb interface, all programs are updated by usb.

- 全部软件校正, 所有压力速度可斜率调整;
- 温度精准度 0.1 度, 位置精准度 0.01mm, 压力精准度 0.1kg;
- IN: 48 点, out: 48 点 (含 6 点可 DC 或 AC 控制), 可任意指定 I/O;



- 支持多国语言, 标准为两国语言, 可扩充至十国语言;
- 使用 USB 进行程式在线更新, 模组参数可储存至 USB 和电控系统内。

DEVICE PARAMETERS

设备参数

Explain 说明		Unit 单位	CF-100T	CF-130T	CF-180T	CF-250T	CF-300T	CF-360T	CF-450T	CF-520T	CF-600T
Injection unit 注射单元	Screw diameter 螺杆直径	mm	30 35 40	35 40 45	40 45 50	45 50 55	55 60 65	60 65 70	65 70 75	70 75 80	80 85 90
	Injection Pressure 射料压力	kg/cm ²	3221 2366 1812	2831 2168 1713	2045 1616 1309	2351 1904 1574	2054 1726 1471	1955 1666 1436	1931 1665 1450	1943 1692 1488	2231 1976 1763
	Theoretical shot volume 理论射出容积	cm ³	113 154 201	173 226 286	264 334 412	398 491 594	713 848 995	998 1161 1347	1261 1462 1678	1539 1767 2011	2312 2610 2926
	Shot weight of injection(PS) 射出量	g	102 139 181	156 204 258	238 301 371	358 442 535	641 763 896	891 1045 1212	1135 1316 1510	1385 1590 1810	2081 2349 2634
		oz	3.6 4.9 6.4	5.5 7.2 9.1	8.4 10.6 13.1	12.6 15.6 18.9	22.7 27 31.7	31.5 36.9 42.8	40.1 46.5 53.4	49 56.2 63.9	73.5 83 93
	Injection rate 射出率	cm ³ /sec	69 94 123	125 163 206	173 219 270	190 235 284	317 377 443	333 391 453	422 490 562	420 482 548	525 593 665
	Plasticizing capacity 塑化能力	kg/hr	35 51 70	51 72 97	89 79 101	66 86 115	111 141 170	145 170 203	175 203 233	179 212 251	232 265 320
	Injection speed 射出速度	mm/sec	124	130	138	120	134	118	127	109	105
Screw revolution 螺杆转速	rpm	250	250	200	170	170	170	170	150	135	
Clamping unit 锁模单元	Mold clamping force 锁模力	ton	100	130	180	250	300	360	450	520	600
	Distance between tie bars 大柱内距	mm	360×360	460×410	510×460	560×510	610×610	710×660	760×760	810×810	860×860
	Mold Platen size 模板尺寸	mm	540×540	620×620	690×690	840×790	900×900	980×980	1050×1110	1180×1180	1250×1250
	Mold thickness 夹模厚度	mm	100-450	125-450	150-550	150-600	200-700	250-750	250-800	250-850	310-900
	Clamping stroke 合模行程	mm	350	450	500	500	600	650	700	800	850
	Mold locating ring 模环尺寸	mm	100	120	120	120	120	120	150	150	150
	Ejector stroke 顶出行程	mm	110	130	150	150	150	175	205	220	220
	Ejector Force 顶出力	ton	5.6	5.6	6.5	8.5	10	10	10	13	13
Electric equipment unit 电器单元	Number of temp control zone 温控数	zone	4	4	4	4	4	5	6	6	6
	Heater capacity 电热容量	kW	6.5	7.5	12	14	14	20	22	25	28
	Motor power 马达功率	kW	18	23	23	28	41	41	57	57	82
	System pressure 系统压力	kg/cm ²	170	170	170	170	170	170	170	170	170
Other 其它	Oil tank capacity 油箱容量	L	160	210	300	450	550	650	750	750	800
	Machine dimensions(L*W*H) 机械尺寸	m	4.1×1.2×1.5	4.5×1.2×1.55	5.3×1.3×1.6	6×1.4×1.7	6.6×1.5×1.8	7×1.6×1.9	7.6×1.7×2.0	8×1.7×2.1	8.3×1.7×2.3
	Machine weight(about) 机械净重	ton	3.7	4.5	6.5	9	11	14	17	20	24

100E

125E

125E

158E

230E

230E

288E

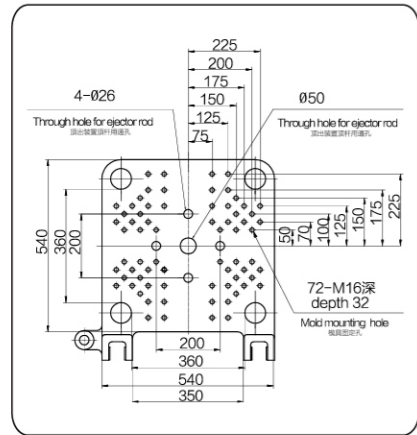
288E

414E

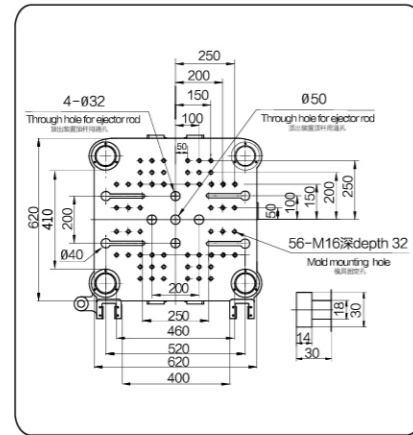
Note: Due to continuous improvement the data in this table are subject to change without prior notice
注: 本表的数据因不断地改良而变更 (不另行通知)

PLATEN DIMENSIONS

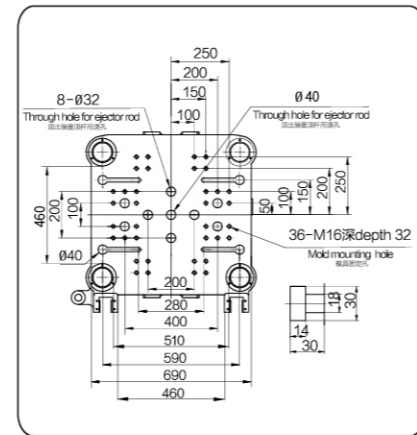
模面尺寸



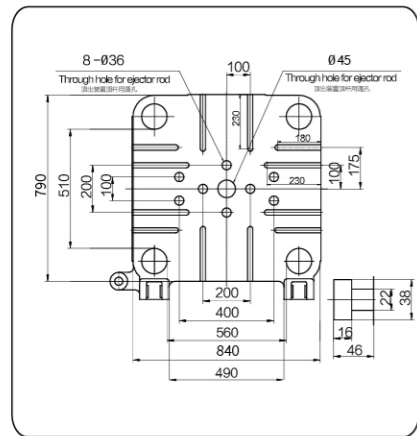
CF-100T



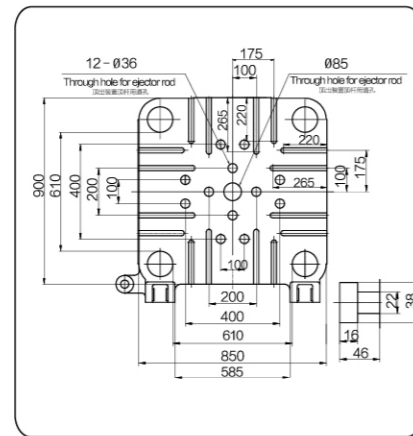
CF-130T



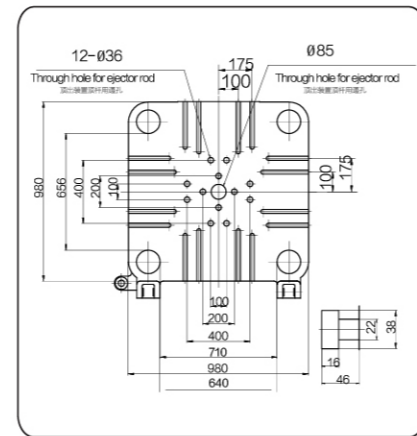
CF-180T



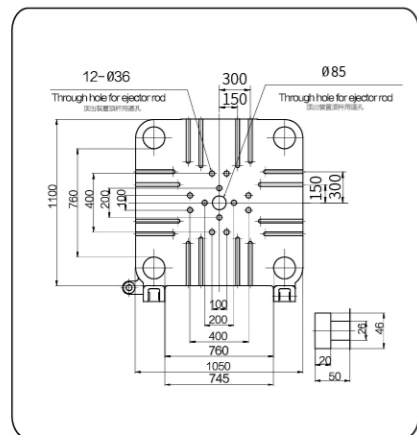
CF-250T



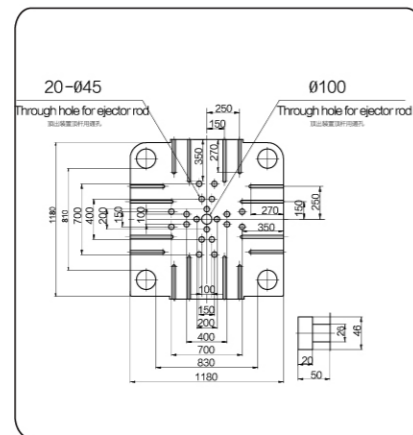
CF-300T



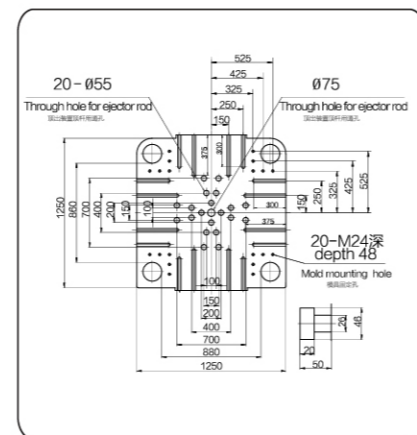
CF-360T



CF-450T



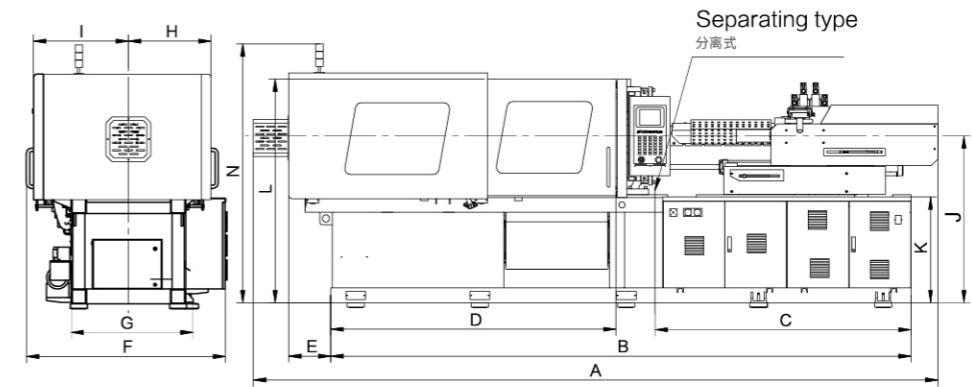
CF-520T



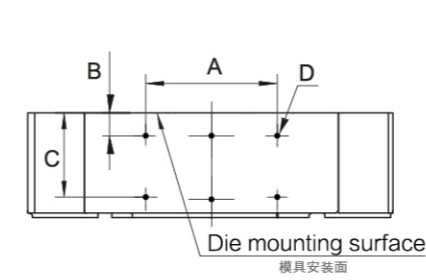
CF-600T

MACHINE DIMENSIONS

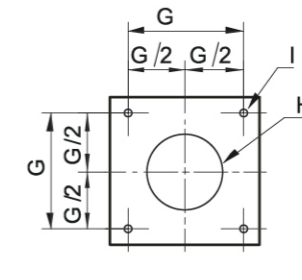
外观尺寸



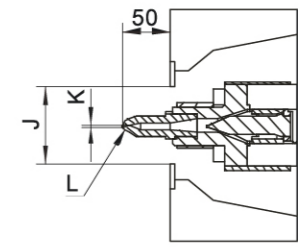
MODEF / 机种	A	B	C	D	E	F	G	H	I	J	K	L	N
CF-100T	4100	3520	-	1770	140	1230	650	480	500	1135	750	1650	1800
CF-130T	4660	4035	-	1910	350	1180	780	510	540	1255	730	1615	1900
CF-180T	4980	4050	-	1885	410	1255	855	555	585	1300	730	1680	1990
CF-250T	5300	4660	-	2245	355	1550	975	665	765	1340	845	1795	2080
CF-300T	6600	5060	-	2400	350	1445	1120	720	720	1300	735	1900	2050
CF-360T	7100	5910	-	2680	400	1720	1270	755	755	1410	645	1900	2170
CF-450T	7600	6680	-	3000	350	1800	1350	830	830	1305	765	1865	2180
CF-520T	8300	6960	-	3230	440	1930	1390	910	910	1355	815	1950	2280
CF-600T	9050	7630	3490	3450	350	2030	1250	995	995	1305	765	1935	2280



Hole Pattern For Robot
机械手固定孔位置



Hopper Mounting Surface
料斗安装面



Nozzle
喷嘴

MODEF / 机种	A	B	C	D	G	H	I	J	K	L
CF-100T	124	25	105	4-M10x20	100	φ 60	4-M12	φ 100	φ 3	SR10
CF-130T	124	25	125	4-M10x20	100	φ 60	4-M12	φ 100	φ 3	SR10
CF-180T	300	40	110	4-M16x32	100	φ 60	4-M12	φ 120	φ 3	SR10
CF-250T	410	70	170	4-M16x32	110	φ 70	4-M12	φ 120	φ 3	SR10
CF-300T	410	85	185	4-M16x32	110	φ 70	4-M12	φ 120	φ 4	SR15
CF-360T	410	92	190	4-M16x32	110	φ 70	4-M12	φ 120	φ 4	SR15
CF-450T	450	100	290	4-M20x40	110	φ 70	4-M12	φ 150	φ 4	SR15
CF-520T	500	75	315	4-M20x40	150	φ 100	4-M16	φ 150	φ 5	SR15
CF-600T	500	75	315	4-M20x40	150	φ 100	4-M16	φ 150	φ 5	SR15

MACHINE FUNCTIONS

功能配置

Injection Unit 注射单元

Function Description 功能描述	Standard 标配	Option 选配
Standard nitrided screw 标准螺杆	●	
Other made for special resins 其他螺杆		○
Pneumatic or hydraulic shut off nozzle 锁闭式喷嘴		○
Twin injection cylinders structure 双缸平衡注射结构	●	
Carriage movement by linear transducer 座台电子尺控制		○
Screw RPM display in controller 螺杆转速显示	●	
High torque plasticising hydraulic motor 油马达予塑	●	
Digital back pressure control 予塑背压比例控制	●	
Barrel feeding zone temperature monitor 下料口温度监测		○
Purge Guard 喷嘴防护罩		○
Barrel heating with insulation protection 料筒隔热防护		○
Heating barrel supporter (above 600T) 料筒支撑装置 (600T以上)	●	
Resin loading perform 上料平台		○
Automatic lubrication system 座台自动集中润滑装置		○
Ceramic heater bands 陶瓷加热圈		○
Infrared heater bands 远红外电热圈		○
Simultaneous plasticising by Servo motor 电预塑		○

Clamping Unit 锁模单元

Function Description 功能描述	Standard 标配	Option 选配
Screw hole mold platen 螺丝孔模板		○
T-slot mold platen 梯形槽模板	●	
Mechanical, electric and clamping unit 油压、电器安全保护	●	
Automatic mold height adjustment by hydraulic motor 自动调模功能	●	
All machine movements by linear transducers 开关模、脱模电子尺控制	●	
Adjustable mold platen supporting device 可调节式模板支撑装置	●	
Moving platen protected by high rigid linear guide 动模板移动高硬度轨道	●	
Clamping zone with top cover (CE Standard) 合模区移动安全顶盖板		○
Servo driven automatic safety door (Operator side) 自动安全门		○
Euromap 12 or 67 robot interfaces 欧规18机械手安装位置		○
Extended guard doors for extra UPVC fitting cylinders 加宽门窗		○
Fast & Easy plugs water regulators for molds 快插接头分水器	●	
Air blast device 两组吹气阀		○
Mold water regulators with temperature and flow control 玻璃管冷却流量计		○

Hydraulic Unit 油路单元

Function Description 功能描述	Standard 标配	Option 选配
Servo motor system 伺服油泵	●	
Variable pump 变量泵		○
Increase pump motor capacity 加大油泵电机功率		○
Sequential injection system 多组顺序注射功能		○
High injection speed by accumulator 蓄能器快速注射		○
Injection servo valve 注射伺服阀		○
Hydraulic oil level alarm 液压油位报警		○
Regeneration clamping system 合模差动装置	●	
Ejector on fly 开模顶出同步 (顶出比例控制)		○
Simultaneous plasticising 开模储料同步 (储料比例控制)		○

Electric Unit 电气单元

Function Description 功能描述	Standard 标配	Option 选配
Taiwan Dizhou controller 帝洲控制器	●	
European KEBA controller KEBA控制器		○
Constantly monitor of machine function 各动作工况实时监视功能	●	
Monitoring for production data 生产资料监测功能	●	
Three-color warning lamp 三色报警灯	●	
Servo motor overload protection 电机过载保护	●	
Emergency stop for both guard doors 前后门紧急停止按钮	●	
Servo power system transformer 伺服动力系统变压器		○
Screw cold start-up prevention 加热双重保护	●	
Safety relay monitoring 安全继电器监控	●	
Heating solid relay control 加热固态继电器控制	●	
Computer network central control system 计算机网络集中控制系统	●	
Hot runner control and interface 热流道控制系统与接口		○
Real time energy consumption monitor 实时能耗监测		○
Constantly monitor of clamping force 实时锁模力监测	●	

Other 其他

Function Description 功能描述	Standard 标配	Option 选配
Special color 特殊颜色		○
Higher machine base 加高机身		○
Robot 机械手		○
Tailor made molded product output bin 取制品平台 加宽门窗		○

Note: Due to continuous improvement the data in this table are subject to change without prior notice
注: 本表的数据因不断地改良而变更 (不另行通知)