



#### TAIWAN COMPANY

Add: No. 31, Gongye 2nd Rd., Annan Dist., Tainan City, Taiwan  
Tel: +886-6-3842728

#### CHINA COMPANY

Add: NO.588,DongHong Road,Guanlin Town,Yixing City,jiangsu province  
Tel: +86-510-87210909 87212681 87212685 87210908  
Fax: +86-510-87212680  
E-mail: sale1@wxcaifeng.com

#### 台湾公司

地址: 台湾台南市安南区工业二路31号  
电话: +886-6-3842728

#### 中国公司

地址: 江苏省宜兴市官林镇东虹路588号  
电话: +86-510-87210909 87212681 87212685 87210908  
传真: +86-510-87212680  
邮箱: sale1@wxcaifeng.com

#### 安徽办事处

地址: 安徽省合肥市华南城精品五区5A-1C3-17-20号  
电话: +86-18961757989 18018326218

www.wxcaifeng.com



Double color, multi-color Injection Molding Machine  
双色, 多色射出成型机

CAI FENG MACHINERY CO.,LTD  
采锋机械有限公司

# FROM TAIWAN SERVING THE WORLD

源于台湾 放眼世界

## OPERATION & PHILOSOPHY

经营及理念

- Keep optimizing the quality of products, and following the trend of market demand.
- Management & development of service team, supporting our customer effectively at any time.
- 结合市场需要, 优化产品品质  
完善售服作业, 有效支持客户

## QUALITY & POLICY

品质政策

- Keep optimizing the quality of products to satisfy the demands of customer.
- Skilled engineers & designers with good experience.
- Standard operation procedure to achieve high standard of machine.
- 持续提升品质, 追求客户满意
- 务实员工训练, 精准技术传承
- 模组作业标准, 实现最高品质

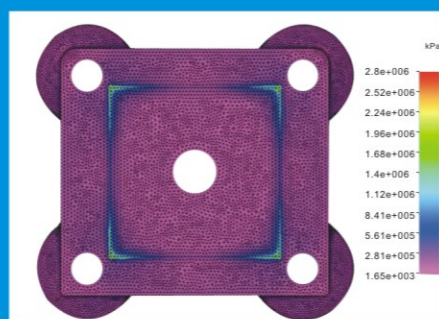
## MARKETING NETWORK 营销网络



With the trend of low carbon & environmental protection, the plastics industry is progressing faster and faster. The features of being multi-cavity, light weight, and fast cycle have already been the demand of plastics industries for the injection molding machine. We CAIFENG MACHINERY, Can be the choice for you.

随着全球提倡低碳环保,以及塑料工业快速发展,多腔化、轻量化、快速化已经成为注塑工厂的需求,而采锋正是您的选择。

## EQUIPMENT CHARACTERISTICS 设备特点

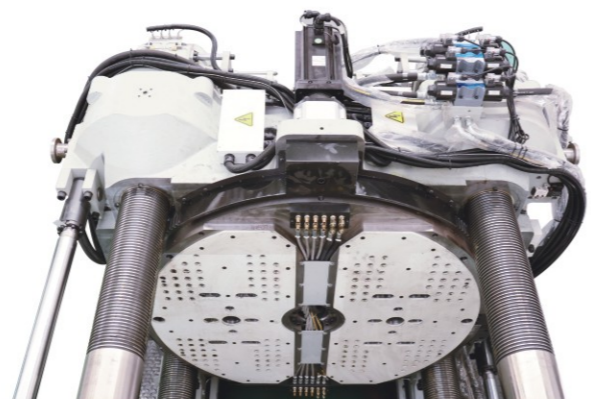


### CLAMPING UNIT 锁模单元

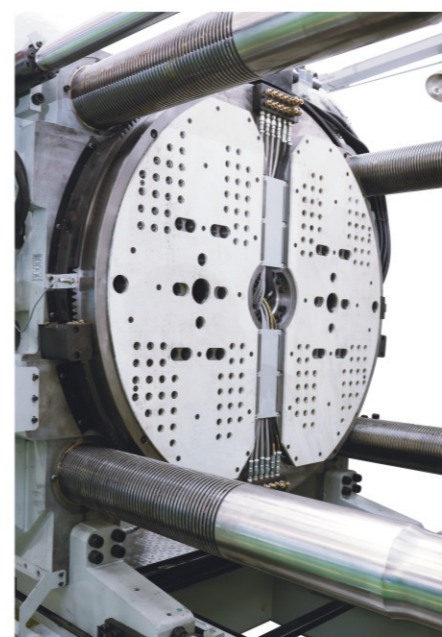
#### TWO PLATEN 两板式(CF-850BDC~CF-1950BDC)

- Large space between tie bar & long distance of opening stroke, which is especially good for products with big or deep size.
- The exact design of clamping unit makes it easier for installation, even decreased 25% area of installation.
- Reducing the product deformation by the design of four force-balanced cylinders.
- Fast time of pressurization & accurate control of clamping pressure, especially suit for compression molding.
- Optimizing the pivoting clamping by 3D dynamic simulation and CAE analysis
- Turntable driven by servo motor
- Electronic grating ensures personal safety.

- 柱内空间大、开模行程超长, 适合生产大型或深腔的产品。
- 锁模单元的精准设计, 安装面积减少了25%。
- 四个出力平均的锁模的油缸, 减少产品的收缩变形。
- 高压锁模建压快,锁模压力控制精准,可配合模具做压缩成型。
- 采用3D动态仿真设计并结合CAE分析的锁模单元, 确保锁模的最佳化。
- 转盘伺服驱动。
- 安全感应光栅, 确保人身安全。



### TOGGLE TYPE 曲轴式(CF-180DC~CF-500DC)



- The internal distance of tie bar is designed with wide from, and it can provide great mode-loading width.
- The increasing intensity of die platen protects over transformation and ensures the injection quality of products.
- Extra length of tie bar diameter and elastic design effectively prevent fracture.
- The mechanical rotary table orientation can ensures the alignment precision.
- Parallel trust structure makes the rotary table stay in great balance.
- Pushing mechanism by high speed rotary table improves both efficiency and stability.
- Long-term lubricating toggle clamping mechanism to save lubricant 30% off.

- 拉杆内距采用宽距设计,容模量大。
- 模壁强度加强设计可防过度变形, 确保射出制品的品质。
- 拉杆直径加大, 并采用弹性式设计可防止断裂。
- 机械转盘定位, 确保定位精准。
- 转盘具有平行推力机构, 转盘不下坠。
- 伺服转盘推动机构速度快, 运转稳定。
- 长效润滑曲手, 可即省润滑油耗油量30%。

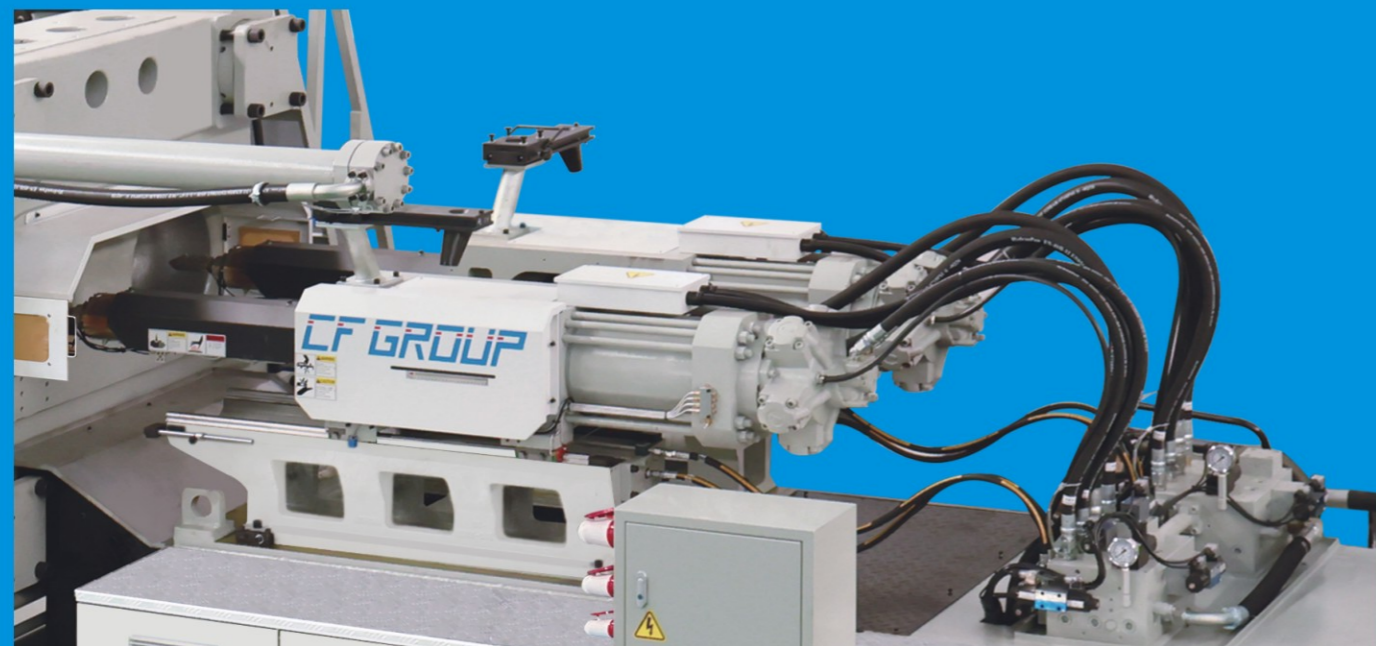
### HYDRAULIC UNIT 液压

- Centralized design in hydraulic system shorter the response time and easy to repair.
- Ensuring precise alignment of the mold by rigid frame stranding machine.
- Saving 30%-70% power compared with traditional pump by high efficiency desingn.
- Easy and convenient to repair and maintain.
- Hydraulic parallel cylinder plunger automatically controls the motion thrust.

- 射出油压系统反应快。射出油压系统采集中式设计, 维修简易且反应敏捷。
- 架构刚性强、不易变形, 确保模具对位精准。
- 高效伺服电机节能, 依产品不同对比传统定量泵省电30%-70%。
- 容易维修和保养。
- 液压平行滑脚, 可自动调节运动推力。



## CONTROL PANEL 控制面板



Easy to operate

操作简易易学

Clear function on panel

功能显示明确

Stable and reliable quality

品质平稳可靠



## INJECTION UNIT

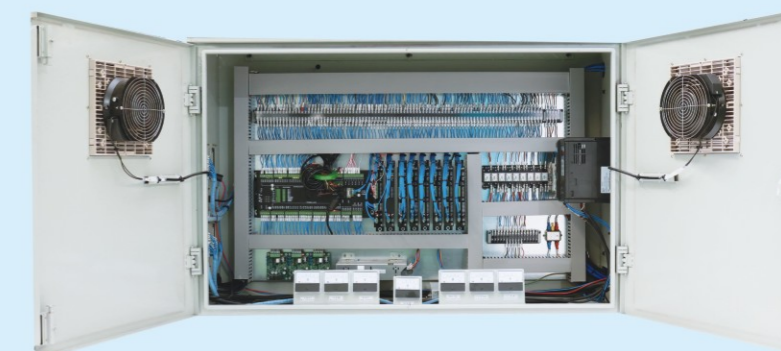
射出

- Ensuring the injection stability and durability by applying high performance steel linear guideways to achieve low-resistant.
- Ensuring the injection accuracy by high speed response time at 0.1sec and 0.1%repetitive.
- The interchangeable injection mechanism can make the injection work in the front or rear with combination freely. Wealth of experience, according to customer's capacity requirements to be adjusted.
- High-quality screws and barrels. Extensive experience offer professional design of thermo processing by customer's requirements with high wear-resistant and high torque, reduce the melting time in high-speed operation of storage mode.
- The turret injection single-cylinder, As loading injection piseon rod does noe rotate. Injection efficiency, high stability.

- 采用高刚性线性滑轨，实现射出滑动部分的低阻力化。确保射出稳定性及持久耐用性。
- 0.1sec以内的高速应答时间及0.1%以内的重复性，确保射出精度。
- 可互换射出机构，前后射出可任意搭配。丰富的经验，可依客户的产能需求，进行调整。
- 优质的料管螺杆组。专业设计且正规的执行热处理，耐磨性高，在高扭力、高转速的储料运作中，可缩短熔胶时间。
- 单缸射出，储料时射出活塞杆不旋转。射出效果高，稳定性佳。

## ELECTRIC UNIT

电气单元



- Completely software calibration function.
- Tolerance of temperature within 0.1°C, tolerance of position within 0.01mm, and tolerance of pressure within 0.1KG.
- The input 48 signal points can be expanded to 120 signal points, the output 24 signal points can be expanded to 120 signal points, AC 16 signal points, and can set I/O signal points according to the needs of customer.
- There is 16 signal points of transducer pressure sensor, maximum 24 signal points of temperature, and the pressure speed can be reach to 8P8F.
- Alarm display when action executing.
- Multi-language support 2 languages(standard) can be upgrade to 10 languages(optional).
- Use usb interface, all programs are updated by usb.

- 全部软件校正，所有压力速度可调整斜率。
- 温度精准度0.1°C，位置精准度0.01mm，压力精准度0.1kg
- IN:48点(可扩展至120点)，OUT24点(可扩充至120点)，AC 16点控制，可任意指定IO。
- 电子尺压力传感器16段，温度最多可至24段，压力速度可达8P8F。
- 动作警报提示。
- 支持多国语言，标准为两国语言，可扩充至十国语言。使用USB进行程式在线更新，模组参数可储存在USB和电控系统内。

# DEVICE PARAMETERS

设备参数

TOGGLE TYPE 曲轴系列

说明 EXPLAIN	机种MODEL	单位 UNIT	CF-180DC						CF-250DC						CF-300DC						CF-350DC						CF-450DC						CF-600DC																											
			A注射			B注射			A注射			B注射			A注射			B注射			A注射			B注射			A注射			B注射																														
射出单元 INJECTION UNIT	螺杆直径 Screw diameter	mm	22	26	28	26	28	30	26	28	30	32	34	36	32	34	36	36	38	42	32	34	36	36	38	42	32	34	36	36	38	42	36	38	42	45	48	52																						
	射料压力 Injection Pressure	kg/cm <sup>2</sup>	2566	2603	2245	2603	2245	2078	2603	2245	2078	3150	2790	2489	3150	2790	2489	2990	2683	2197	3150	2790	2489	2990	2683	2197	2652	2349	2095	2990	2683	2197	2990	2683	2197	2518	2213	1886																						
	理论射出容积 Theoretical shot volume	cm <sup>3</sup>	49	69	80	69	80	91	69	80	91	145	163	183	145	163	183	198	221	270	145	163	183	198	221	270	145	163	183	198	221	270	198	221	270	524	597	700																						
	射出量(PS) Shot weight of injection(PS)	g	44	62	72	62	72	83	62	72	83	130	147	165	130	147	165	178	199	243	130	147	165	178	199	243	130	147	165	178	199	243	178	199	243	472	537	630																						
		oz	1.5	1.7	2.5	1.7	2.5	2.9	1.7	2.5	2.9	4.6	5.2	5.8	4.6	5.2	5.8	6.3	7	8.5	4.6	5.2	5.8	6.3	7	8.5	4.6	5.2	5.8	6.3	7	8.5	6.3	7	8.5	16.7	19	22.3																						
	射出率Injection rate	cm <sup>3</sup> /sec	94	87	107	87	107	120	87	107	120	90	101	114	90	101	114	123	137	167	112	127	142	123	137	167	112	127	142	123	137	167	123	137	167	324	368	432																						
	塑化能力 Plasticizing capacity	kg/hr	18	25	30	25	30	34	25	30	34	60	74	84	60	74	84	52	58	68	60	74	84	52	58	68	60	74	84	52	58	68	52	58	68	97	118	148																						
	射出速度Injection speed	mm/sec	119			119			119			106			106			116			106			116			106			116			116			111																								
	螺杆转速Screw revolution	rpm	230			230			230			200			200			180			200			180			200			180			180			160																								
锁模单元 CLAMPING UNIT	锁模力Mold clamping force	ton	180						250						300						350						450						600																											
	大柱内距 Distance between tie bars	mm	770x320						915x560						958x578						1040x630						1140x660						1190x760																											
	模板尺寸Mold Platen size	mm	1000x550						1225x952						1260x960						1360x915						1460x980						1550x1140																											
	夹模厚度Mold thickness	mm	200-550						200-600						200-600						200-650						200-700						300-850																											
	最大开模距离Max. Daylight	mm	350						460						500						580						600						700																											
	模环尺寸Mold locating ring	mm	100						100						100						100						100						150																											
	顶出行程Ejector stroke	mm	140						150						150						150						150						150																											
	顶出力Ejector Force	ton	2.8						2.8						2.8						2.8						2.8						3.5																											
	转盘直径Rotary table diameter	mm	860						1060						1100						1200						1300						1400																											
	双喷嘴中心距 Distance between barrel centers	mm	400						500						500						550						550						650																											
电器单元 ELECTRIC EQUIPMENT UNIT	温控数 Number of temp control zone	zone	4			4			4			4			4			4			4			4			4			4			4			4																								
	马达功率 Motor power	kw	7.9			7.9			7.9			12			12			23			12			23			12			23			23			28																								
	电热容量Heater capacity	kw	3.8			3.8			3.8			5			5			8			5			8			5			8			8			14																								
	系统压力System pressure	kg/cm <sup>2</sup>	170			170			170			170			170			170			170			170			170			170			170			170																								
其它 OTHER	油箱容量Oil tank capacity	L	250						350						450						500						500						600																											
	机械尺寸(长x宽x高)	m	6.0x1.8x1.9						6.5x2.1x2.3						6.8x2.1x2.3						7.2x2.0x2.3						7.3x2.5x2.6						8.5x3.7x3.4																											
	Machine dimensions(L*W*H)		62L						62L						62L						80L						80L						125L						80L						125L						125L						158L			

Note: Due to continuous improvement the data in this table are subject to change without prior notice

注：本表的数据因不断地改良而变更（不另行通知）

# DEVICE PARAMETERS

设备参数

## TWO PLATEN TYPE 两板系列

机种/Model		UNIT	CF-850BDC NB		CF-1050BDC NB				CF-1250 BDC				CF-1450BDC				CF-1650BDC				CF-1950BDC			
说明/Explain																								
INJECTION UNIT 射出单元	Screw Diameter 螺杆直径	mm	32	36	50	55	60	65	55	60	60	65	55	60	70	75	55	60	70	75	55	60	70	75
	Injection Pressure 射料压力	kg/cm <sup>2</sup>	2650	2585	2521	2084	2191	1867	2608	2191	2191	1867	2608	2191	2115	1842	2608	2191	2115	1842	2608	2191	2115	1842
	Theoretical Shot Volume 理论射出容积	cm <sup>3</sup>	156	198	647	784	989	1160	831	989	1074	1160	831	989	1616	1855	831	989	1616	1855	831	989	1616	1855
	Shot Weight of Injection (PS) 射出量	g	140	178	583	705	890	1044	748	890	966	1133	748	890	1454	1670	748	890	1454	1670	748	890	1454	1670
		oz	4.9	6.3	20.6	24.9	31.4	36.8	26.4	31.5	34.1	40	26.4	31.5	51.4	58.9	26.4	31.5	51.4	58.9	26.4	31.5	51.4	58.9
	Injection Rate 射出率	cm <sup>3</sup> /s	256	320	323	391	362	424	303	362	363	424	303	362	384	615	303	362	384	615	303	362	384	615
	Plasticizing Capacity 塑化能力	kg/hr	38	52	133	166	166	202	149	166	171	209	149	166	249	187	149	166	249	187	149	166	249	187
	Injection Speed 射出速度	mm/s	265	265	128		128		128		128		128		114		128		114		128		114	
Screw Speed 螺杆转速	rpm	200	200	210		210		180		180		160		160		160		160		160		160		
CLAMPING UNIT 锁模单元	Mold Clamping Force 锁模力	ton	850		1050				1250				1450				1650				1950			
	Distance Between Tie Bars (W*H) 大柱内距	mm	1130 × 960		1350 × 1100				1400 × 1300				1600 × 1450				1600 × 1450				1750 × 1600			
	Mold Platen Size(W*H) 模板尺寸	mm	1645 × 1500		1880 × 1630				1980 × 1880				2300 × 2050				2350 × 2150				2550 × 2250			
	Mold thickness 夹模厚度	mm	300-900		500-1300				700-1450				700-1600				900-1750				900-1900			
	Clamping stroke 合模行程	mm	1800		2000				2100				2300				2300				2500			
	Mold Locating Ring Diameter 模环尺寸	mm	150		150				150				150				150				150			
	Ejector Stroke 顶出行程	mm	160		250				250				350				350				350			
	Ejector Force 顶出力	ton	8.5		11				11				10 × 2				10 × 2				10 × 2			
	Rotary table Diameer 转盘直径	mm	1500		1700				1900				2100				2300				2500			
	Diseance Between Barrel Centers 料管中心距离	mm	710		710				710				710				710				710			
	Mould opening distance 开模距离	mm	2100		2500				2800				3000				3200				3400			
ELECTRIC UNIT 电气单元	Number of Temperature Control 温控数	zone	4	4	4	4	4	4	6	6	6	6	6	6	6	6	6	6	6	6	6	6		
	Heater Capacity 电热容量	kw	8	8	22	22	22	22	25	25	25	25	20	28	20	28	22	28	22	28	22	28		
	System Pressure 系统压力	kg/cm <sup>2</sup>	170	170	170	170	170	170	170	170	170	170	170	170	170	170	170	170	170	170	170	170		
OTHERS 其他	Oil Tank Capacity 油箱容量	L	1000		1200				1300				1500				1500				1500			
	Machine Dimension(LxWxH) 机械尺寸	M	8 × 2.7 × 2.15		8.6 × 3 × 2.5				9.6 × 3.5 × 2.8				10.5 × 3.7 × 3.2				11.5 × 3.8 × 3.3				13 × 4 × 3.4			
	Machine Weight 机械净重	TON	32		40				60				80				90				112			

Note: Due to continuous improvement the data in this table are subject to change without prior notice

注：本表的数据因不断地改良而变更（不另行通知）