



臺灣公司

地址：臺南市永康區永二街193巷1弄7號  
電話：+886-6-2013259  
傳真：+886-6-3013999

中國公司

地址：江蘇省宜興市官林鎮東虹路588號  
電話：+86-510-87210909 87212681 87212685 87210908  
傳真：+86-510-87212680  
郵箱：sale1@wxcaifeng.com

TAIWAN COMPANY

Add : NO.7 lane 1,193 alley,yongre street yung kang city tainan hsien  
Tel : +886-6-2013259  
Fax : +886-6-3013999

CHINA COMPANY

Add : NO.588,DongHong Road,Guanlin Town,Yixing City,jiangsu province  
Tel : +86-510-87210909 87212681 87212685 87210908  
Fax : +86-510-87212680  
E-mail : sale1@wxcaifeng.com

www.wxcaifeng.com



**CF GROUP**

Two Platen Injection Molding Machine  
二板式射出成型機

东翔印务设计制作 0510-66892271

采鋒機械有限公司  
CAI FENG MACHINERY CO.,LTD

www.wxcaifeng.com

應用行業/ Applicable industries



產品展示/ Product Display



二板式射出成型機

Two platen injection molding machine



曲肘式射出成型機

Toggle type injection molding machine



雙色、多色射出成型機

Double color & multi color injection molding machine



雙色二板式射出成型機

Double color two platen injection molding machine

營銷網絡/ Marketing Network

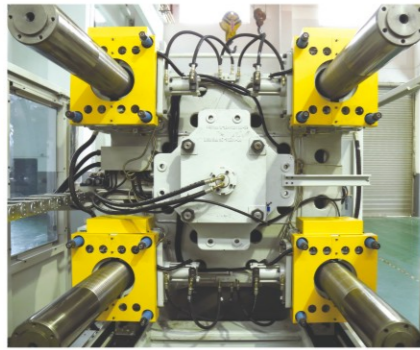


經營及理念 Operation & Philosophy

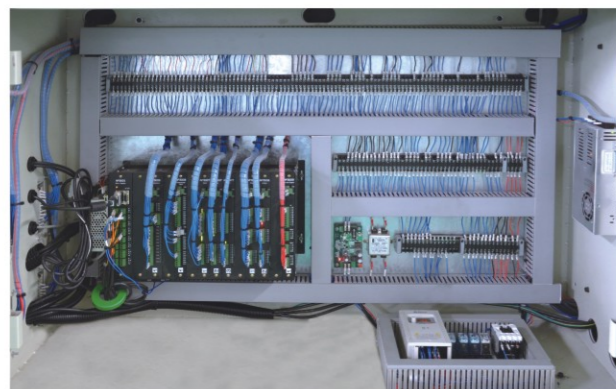
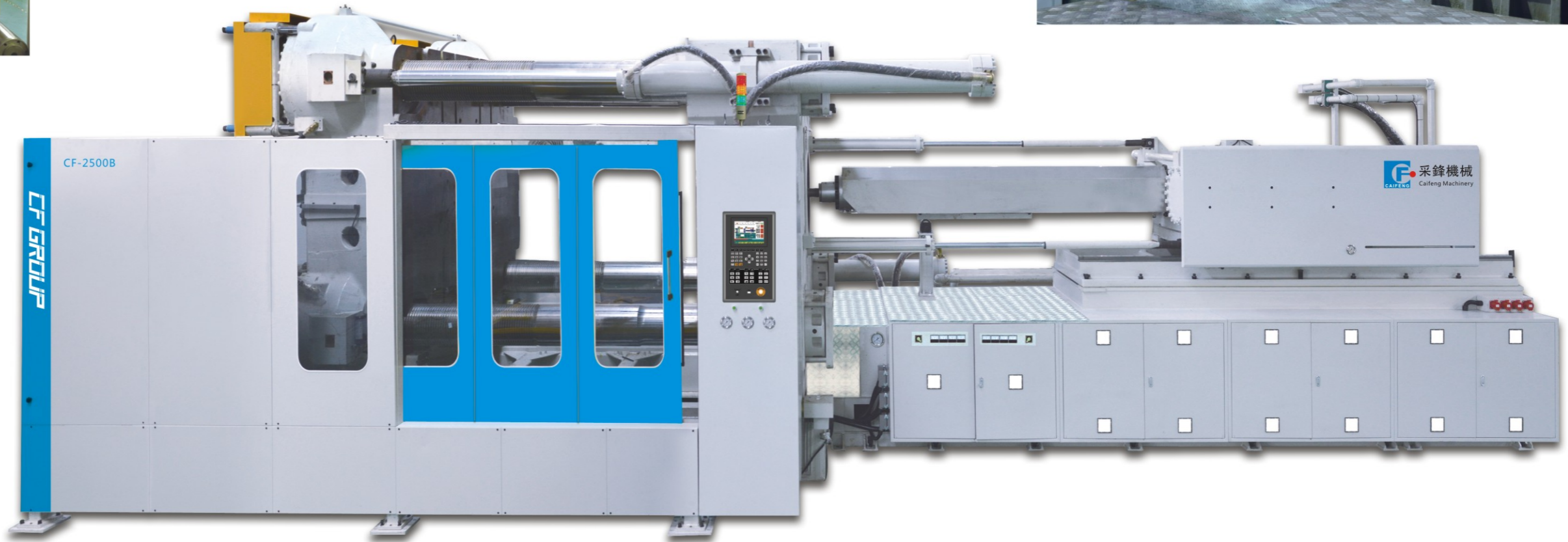
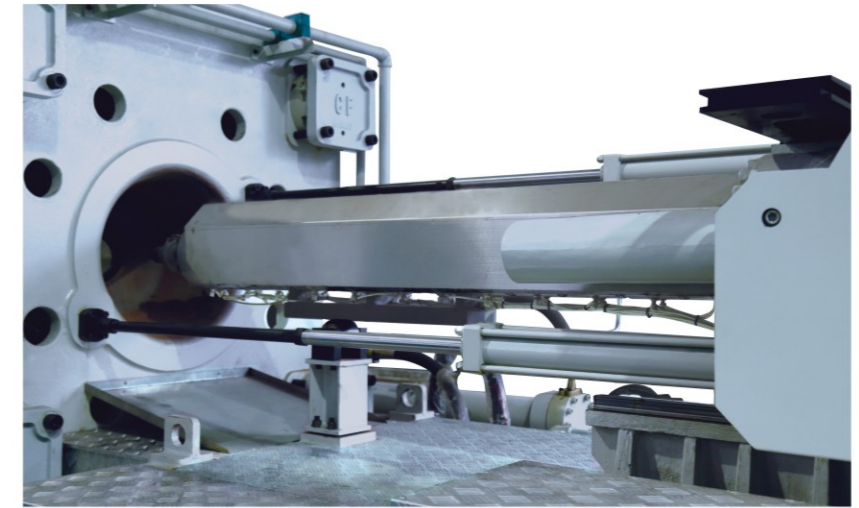
- 結合市場需要，優化產品品質      Keep optimizing the quality of products, and following the trend of market demand.
- 完善售服作業，有效支持客戶      Management & development of service team, supporting our customer effectively at any time.

品質政策 Quality & Policy

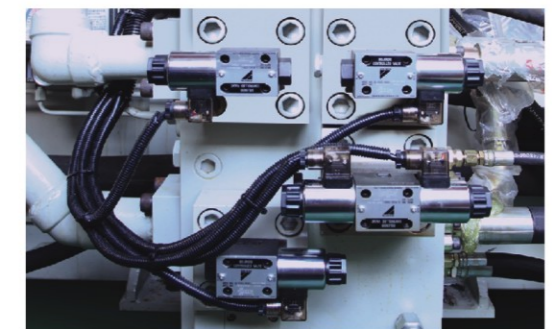
- 持續提升品質，追求客戶滿意      Keep optimizing the quality of products to satisfy the demands of customer.
- 務實員工訓練，精準技術傳承      Skilled engineers & designers with good experience.
- 模組作業標準，實現最高品質      Standard operation procedure to achieve high standard of machine.



**高精度** **高效率**  
 HIGH ACCURACY HIGH EFFICIENCY



➤➤➤ 穩定 高速 潔淨 可靠 節能 模塊化  
 個性化 性價比 操作簡單  
 Stability high speed clean reliability energy saving  
 modularity individuality cost-performance simplicity of operator



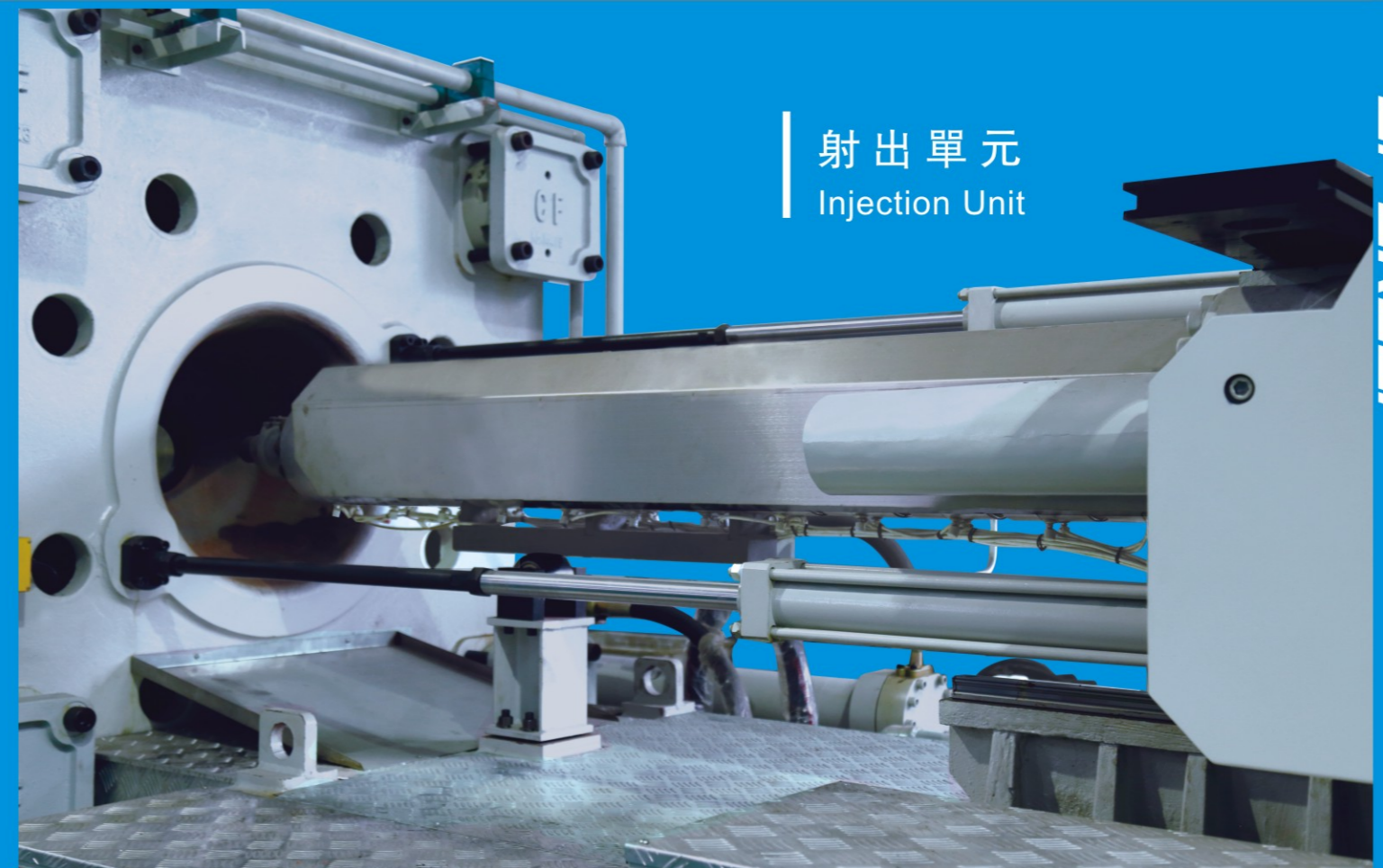
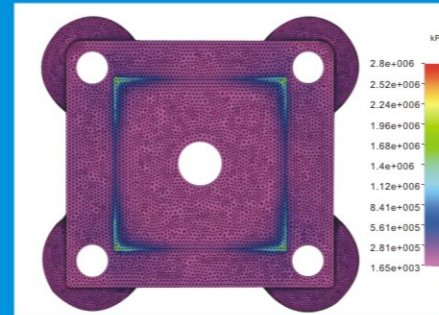
★ 伺服儲料系統/Servo Loading System

註: ★為選配項目/Optional Items

隨着全球提倡低碳環保,以及塑料工業快速發展,多腔化、輕量化、快速化已經成爲注塑工廠的需求,而采鋒正是您的選擇。

With the trend of low carbon & environmental protection, the plastics industry is progressing faster and faster. The features of being multi-cavity, light weight, and fast cycle have already been the demand of plastics industries for the injection molding machine. We CAIFENG MACHINERY, Can be the choice for you.

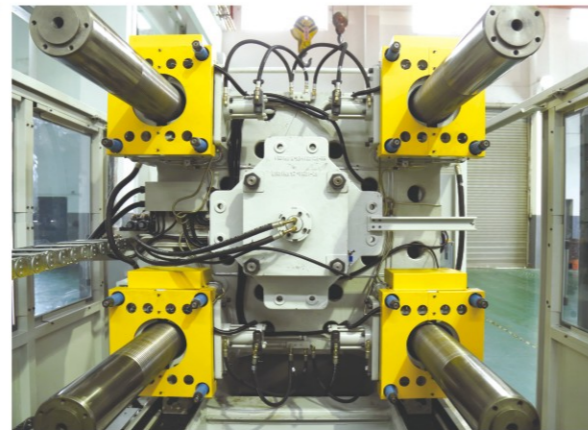
## 鎖模單元 Clamping Unit



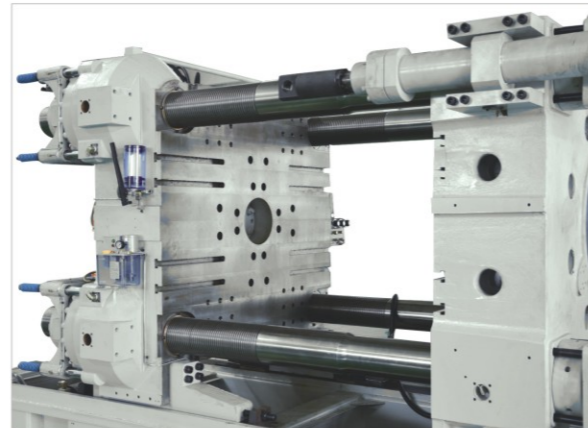
## 射出單元 Injection Unit

### 設備特點 / Equipment characteristics

- 柱內空間大、開模行程超長,適合生產各種大或深的產品。
- 鎖模單元的精準設計,安裝面積減少了25%。
- 四個出力平均的鎖模的油缸,減少產品的收縮變形。
- 高壓鎖模建壓快,鎖模壓力控制精準,可配合模具做壓縮成型。
- 採用3D動態仿真設計并結合CAE分析的鎖模單元,確保鎖模的最佳化。



- Large space between tie bar & long distance of opening stroke, which is especially good for products with big or deep size.
- The exact design of clamping unit makes it easier for installation, even decreased 25% area of installation.
- Reducing the product deformation by the design of four force-balanced cylinders.
- Fast time of pressurization & accurate control of clamping pressure, especially suit for compression molding.
- Optimizing the pivoting clamping by 3D dynamic simulation and CAE analysis



### 設備特點 / Equipment characteristics

- 採用高剛性綫性滑軌,實現射出滑動部分的低阻力化。確保射出穩定性及持久耐用性。
- 0.1sec以內的高速應答時間及0.1%以內的重復性,確保射出精度。
- 屏幕設定比例閥控制背壓,實現高度精準的生產。
- 採用大扭矩液壓馬達,實現對各類塑料的充分塑化。
- 射出採用雙油缸平行注射,射出穩定、定位精準。



- The high rigid linear guideway realizes its function of lower resistance and ensures the injection unit stable and durable.
- Accurate injection unit of high speed response time within 0.1 second, and repetition within 0.1 percent.
- Proportional valve on the screen control the back pressure for highly precise production.
- High torque hydraulic motor achieves the effective response for various resin.
- The injection unit is stable and accurate by applying double cylinders.

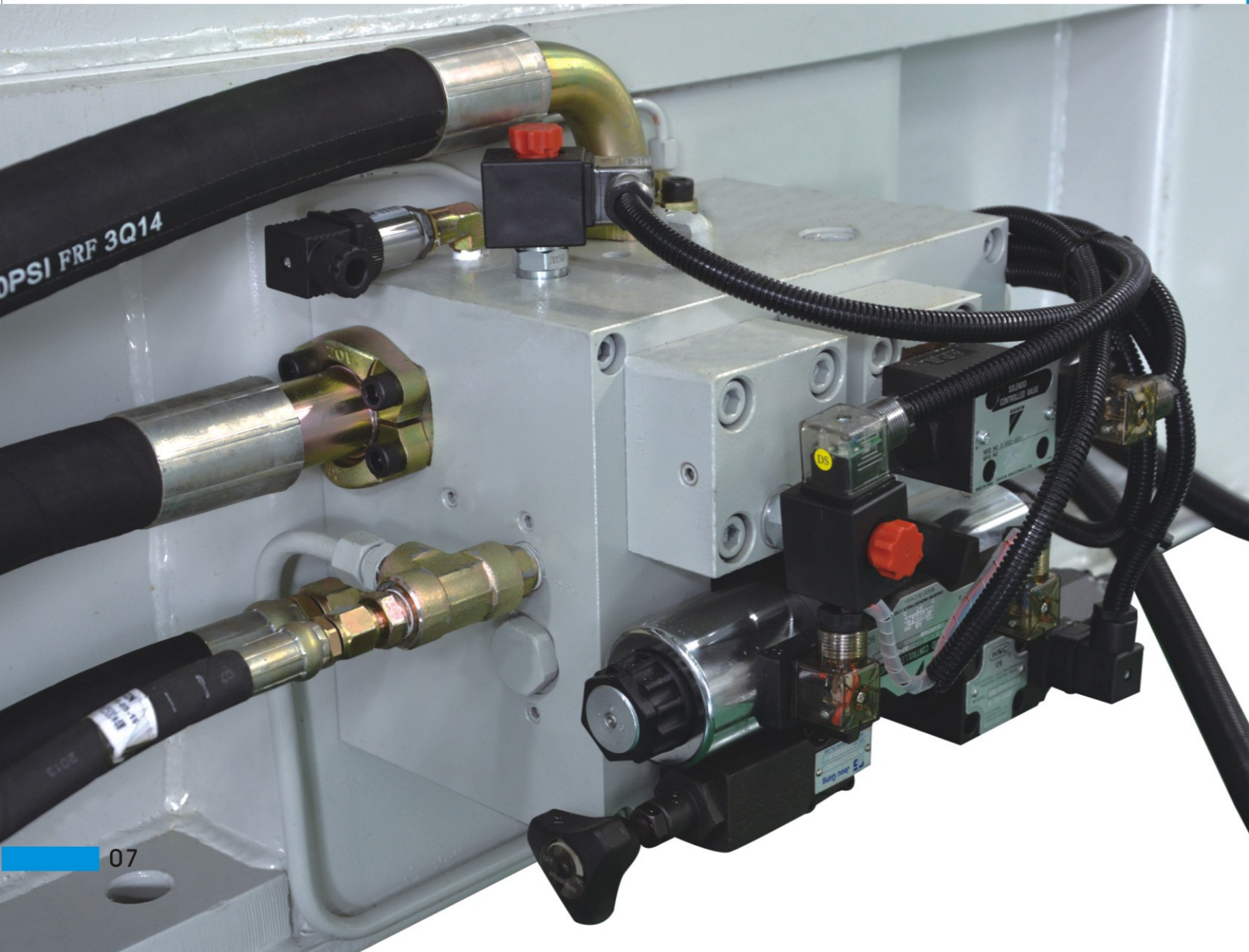


## 液壓單元 Hydraulic Unit



### 設備特點 / Equipment characteristics

- ✔ 全伺服控制的安全門，控制迅速、穩定可靠。
- ✔ 快速穩定的全自動調模。可節省模具更換時間。
- ✔ 高效節能，依產品不同對比傳統定量泵省電30%~70%。
- ✔ 液壓系統採用邏輯閥集中式設計，反應更敏捷。
- ✔ 容易維修和保養。
- ✔ Safety door controlled by servo system, it's stable, safe and responding immediately.
- ✔ Quick and stable die height adjustment, which saves time for exchange of mold
- ✔ Different from traditional proportional pump, our machine can save 30%~70% power by applying servo system, subject to different kinds of products.
- ✔ Responding fast by the design of logical valve.
- ✔ Convenient for repairing and maintenance.



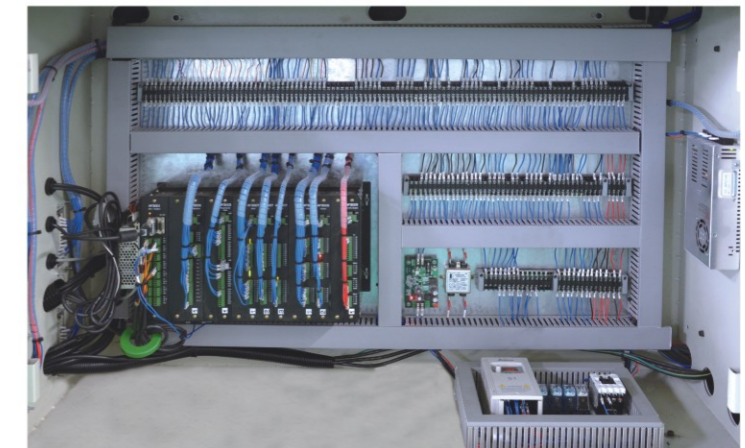
## 控制面板 Control Panel

操作簡易易學  
功能顯示明確  
品質平穩可靠

Easy to operate  
Clear function on panel  
Stable and reliable quality



## 電氣單元 Electric Unit



- ✔ 全部軟件校正，所有壓力速度可斜率調整。
- ✔ 溫度精準度0.1°C，位置精準度0.01mm，壓力精準度0.1kg
- ✔ IN:48點(可擴展至120點)，OUT24點(可擴充至120點)，AC 16點控制，可任意指定IO。
- ✔ 電子尺壓力傳感器16段，溫度最多可至24段，壓力速度可達8P8F。
- ✔ 動作警報提示。
- ✔ 支持多國語言，標準為兩國語言，可擴充至十國語言。
- ✔ 使用USB進行程式在綫更新，模組參數可儲存至USB和電控裏邊。
- ✔ 臺灣製造。
- ✔ Completely software calibration function
- ✔ Tolerance of temperature within 0.1°C, tolerance of position within 0.01mm, and tolerance of pressure within 0.1KG
- ✔ The input 48 signal points can be expanded to 120 signal points, the output 24 signal points can be expanded to 120 signal points, AC 16 signal points, and can set I/O signal points according to the needs of customer.
- ✔ There is 16 signal points of transducer pressure sensor, maximum 24 signal points of temperature, and the pressure speed can be reach to 8P8F.
- ✔ Alarm display when action executing
- ✔ Multi-language support 2 languages(standard) can be upgrade to 10 languages(optional)
- ✔ Use usb interface, all programs are updated by usb
- ✔ Made in taiwan

# 二板式射出成型機規格

## Two-platen injection molding machine specifications

說明/EXPLAIN		機種/MODEL	CF-600B			CF-800B			CF-1000B			CF-1300B			CF-1600B			CF-2000B			CF-2500B			CF-3200B		
		單位	A	B	C	A	B	★C	A	B	★C	A	B	C	A	B	C	A	B	C	A	B	C	A	B	C
Injection Unit 射出單元	螺桿直徑/Screw diameter	mm	80	85	90	90	100	110	100	110	120	110	120	130	130	140	150	140	150	160	140	150	160	160	170	180
	射料壓力/Injection Pressure	kg/cm <sup>2</sup>	2044	1811	1615	1956	1584	1529	1850	1529	1591	2124	1785	1521	1738	1499	1306	1911	1665	1463	1911	1665	1463	1912	1694	1511
	理論射出容積/Theoretical shot volume	cm <sup>3</sup>	2212	2496	2800	3180	3927	4751	3927	4751	6554	5702	6786	7963	9954	11545	13253	12314	14136	16084	12314	14136	16084	18095	20428	22902
	射出量(PS)/Shot weight of injection	g	1991	2272	2519	2863	3573	4324	3573	4324	5964	5189	6175	7247	9058	10506	12060	11206	12864	14637	11206	12864	14637	16466	18589	20841
		oz	71.5	80.1	89	101	126	152	126	152	210	182	216	254	319	370	425	395	453	516	395	453	516	580	655	735
	射出率/Injection rate	cm <sup>3</sup> /sec	552	623	699	722	892	1080	921	1115	1335	1066	1269	1490	1467	1701	1953	1458	1674	1904	1458	1674	1904	1777	2006	2250
	塑化能力/Plasticizing capacity	kg/hr	221	371	305	300	390	380	300	356	401	356	401	518	518	666	815	666	815	999	666	815	999	999	1200	1450
	射出速度/Injection speed	mm/sec	110			113			117			111			110			94			94			88		
螺桿轉速/Screw revolution	rpm	160			133			168			140			140			80			80			80			
Clamping Unit 鎖模單元	鎖模力/Mold clamping force	ton	600			800			1000			1300			1600			2000			2500			3200		
	大柱內距/Distance between tie bars	mm	960x860			1100x960			1210x1060			1410x1210			1600x1400			1800x1500			2000x1600			2200x1800		
	模板尺寸/Mold Platen size	mm	1300x1250			1550x1500			1760x1760			2000x1800			2300x2100			2600x2300			2900x2500			3200x2800		
	夾模厚度/Mold thickness	mm	300-900			500-1100			600-1300			650-1400			700-1500			900-1700			900-1900			1000-2100		
	最大開模距離/Max.Daylight	mm	1800			2300			2800			3000			3200			3400			3600			3800		
	模環尺寸/Mold locating ring	mm	150			150			150			150			150			150			315			315		
	頂出行程/Ejector stroke	mm	220			300			300			350			350			400			400			400		
	頂出力/Ejector Force	ton	12			17			20			20			20			40			40			40		
Electric Unit 電氣單元	溫控數/Number of temp control zone	zone	8			8			8			8			8			8			8			8		
	馬達功率/Motor power	kw	30x2			30+30+24			30x3			30x4			30x4			30x5			30x5			30x6		
	電熱容量/Heater capacity	kw	28			45			45			60			75			90			90			105		
	系統壓力/System pressure	kg/cm <sup>2</sup>	170			170			170			170			170			170			170			170		
Other 其它	油箱容量/Oil tank capacity	L	800			1000			1300			2000			2000			2600			2600			3000		
	機械尺寸/Machine dimensions(L*W*H)	m	7.5x2.4x2.3			8.6x2.7x2.5			10x3.0 x2.62			11x3.3x2.85			12x3.7x3.15			13.55x4.08x3.4			15x4.45x3.7			17x4.8x4.0		
	機械淨重/Machine weight(about)	ton	24			32			40			60			80			105			135			180		

★標記為特殊機型Marked as a special model

400E 500E 530E 600E 600E 750E

800E 900E

900E

1000E

1000E

1200E

註：本表的數據因不斷地改良而變更（不另行通知）

Note: Due to continuous improvements, we reserves the right to modify technical parameters timely without notice.



# 機械配置

## Function List

注射單元/Injection Unit		
功能描述/注射重量/Function Description/Injection of Equivalent	標配/● Standard	選配/● Option
標準螺絲/Standard screw	●	
雙缸平衡注射結構/Double balance cylinder injection structure	●	
螺絲轉速顯示/Screw rotation speed display	●	
油壓儲料馬達/Hydraulic motor plasticizing	●	
儲料背壓比例控制/Plasticizing proportional backpressure	●	
下料口溫度監測/Feed zone temperature monitoring		●
噴嘴防護罩/Nozzle cover		●
料筒支撐裝置/Feed cylinder supporting device	●	
上料平臺/Material-putting platform		●
座臺集中潤滑裝置/Seat stand centralized lubrication		●
陶瓷加熱圈/Ceramic heater band		●
氣輔助注射接口/Gas assisted injection interface		●
乾燥料斗/Hopper dryer		●
不銹鋼料斗/Stainless steel hopper		●
鎖模單元/Clamping Unit		
功能描述/鎖模單元/Function Description/Clamping unit	標配/● Standard	選配/● Option
螺絲孔模板/Screw hole template		●
T型槽模板/T-slot template	●	
模板(歐規2模具安裝尺寸)/Mold platen(Euromap 2 dies mounting dimensions)		●
油壓、電器安全保護/Hydraulic pressure&electric interlock device	●	
液壓安全保護/Hydraulic safety protection	●	
自動調模功能/Automatic adjustment of die height	●	
開模、脫模電子尺控制/Mold open&close and ejector transducer control	●	
定量式自動集中潤滑系統/Quantitative automatic centralized lubrication	●	
可調節式模板支撐裝置/Adjustable mold platen supporting device	●	
動模板移動高硬度軌道板/Core mold platen moved high rigidity rail board	●	
合模區移動安全頂蓋版/Movable safe top cover on clamping unit		●
自動安全門/Automatic safety door	●	
一組分水器/One group water regulation	●	
兩組分水器/Two groups water regulation		●
快插接頭分水器/Quick coupling water regulation		●
兩組吹氣閥/Two groups blow air valve		●
2組抽芯 ( 動模 ) 2 groups core pull(moving platen)	●	
3組抽芯 ( 動模2組, 定模1組 ) 3 groups core pull(moving 2 sets, fixed die 1 set)	●	
4組抽芯 ( 動模2組, 定模2組 ) 4 groups core pull(moving 2 sets, fixed die 1 set)		●
開模頂出同步 ( 頂出無比例控制 ) Open mold ejection synchronization(ejection without ratio control)		●
開模頂出同步 ( 頂出比例控制 ) Open mold ejection synchronization(ejection with ratio control)		●
開模儲料同步 ( 儲料無比例控制 ) Open mold storing synchronization(storing without ratio control)		●
開模儲料同步 ( 儲料比例控制 ) Open mold storing synchronization(storing with ratio control)		●
開模、頂出、儲料同步 ( 比例控制 ) Open mold、ejection、storing synchronization(ratio control)		●
開合模比例控制 Mold opening & closing by proportional control	●	
頂出閉環控制 Ejection with colose loop&indication	●	
液壓單元/Hydraulic Unit		
功能描述/液壓單元 Function Description/Hydraulic Unit	標配/● Standard	選配/● Option
伺服油泵 Servo motor system	●	
加大油泵電機功率 Increase pump motor capacity		●
蓄能器快速注射 Accumulator rapid injection		●

注射伺服閥 Inject servo valve		●
液壓油位報警 Hydraulic oil level alarm		●
吸油口鎖閉裝置 Oil suction lock closed device	●	
冷水閥 Cold water valve		●
電氣單元/Electric Unit		
功能描述/電氣單元Function Description/Electric Unit	標配/● Standard	選配/● Option
諦洲控制器 DIHZHOU controller	●	
KEBA控制器 KEBA controller		●
各動作工況實時監視功能 Real time working condition monitor	●	
生產資料監測功能 Monitoring for production data	●	
故障報警顯示功能 Automatic shows error	●	
注射壓力轉保壓功能Injection pressure transfer holding function	●	
I/O監測顯示 I/O monitoring display	●	
三色報警燈 Three-color warning light	●	
電機過載保護 Electric motor overload protection	●	
前後門緊急停止按鈕 Emergency stop button for safety door	●	
380V/16A五芯插座1組 380V/16A 5-core power socket 1 set	●	
380V/16A五芯插座2組 380V/16A 5-core power socket 2 sets	●	
220V/10A三芯插座1組 220V/16A 3-core power socket 1 set	●	
380V/32A五芯插座2組 380V/32A 5-core power socket 2 sets		●
伺服動力系統變壓器 Servo power system transformer		●
歐規12機械手接口 Euromap 12 manipulator interface		●
歐規67機械手接口 Euromap 67 manipulator interface		●
加熱雙重保護 Heating dual protection	●	
安全繼電器監控 Safety relay monitoring	●	
加熱固態繼電器控制 Heating solid relay control	●	
計算機網絡集中控制系統 Computer network central control system		●
熱流道控制系統與接口 Hot runner control and interface		●
實時鎖模力監測 Real time mold clamping force monitor	●	
其他/Others		
功能描述Function Description	標配/● Standard	選配/● Option
采鋒機器B系列標準顏色Standard color of CAIFENG machine	●	
防震機床墊腳 Shockproof pad	●	
地腳鋼板 Anchor plate	●	
地腳螺絲 Anchor bolt		●
常用工具、易損備件、說明書、模具壓板 Standard common tools、easily-consumed parts、clamping bar & manual book	●	
特殊顏色 Special color		●
加高機身 Higher machine base		●
機械手 Robot		●
磁力架 Hopper magnet		●
冷水機 Chiller		●
模溫機 Mold temperature controller		●
除濕機 Dehumidifier		●
自動上料機 Auto-loader		●

註：本表的數據因不斷地改良而變更（不另行通知）  
Note: due to continuous improvement the data in this table are subject to change without prior notice